



—— TRACK AND TRACE ——

## PRODUCTS FOR TRACEABILITY



## SCANNERS FOR EVERY TYPE OF INDUSTRIAL APPLICATIONS

**Office & Works:**  
Plot No: 1 & 2, 5<sup>th</sup> Main Road,  
Maxworth Nagar 1<sup>st</sup> Phase,  
Kolapakkam, Chennai – 600128.

Email: [info@mavenworks.net](mailto:info@mavenworks.net)

Mobile : +91 9176660971  
+91 9360280585  
+91 9384083055

Website: [www.mavenworks.net](http://www.mavenworks.net)



## Handheld - 1D / 2D MW300X Series Industrial Grade Rugged Scanner

Takes a beating and still scans faster and farther

### Features

- ❖ Corded and cordless models
- ❖ Multiple data capture models : standard range high density, DPM, extended range and more

### Portfolio Differentiators

- ❖ Instantly capture problematic barcodes
- ❖ Highest drop and tumble specifications
- ❖ Dust proof, spary proof
- ❖ Built to withstand extreme heat, cold and humidity
- ❖ Power Precision + provides visibility in to battery health (cordless only)
- ❖ Exclusive dedicated on-demand battery gauge (cordless only)
- ❖ Virtual Tether anti-loss and AutoConfig Scanner Setting capabilities



## DUSTPROOF SHOCKPROOF



## 1 MEGA PIXEL HIGH RESOLUTION INDUSTRIAL LENS

Even blurring, incomplete 2D & 1D codes can be decoded



QR



Data Matrix



PDF417



Damaged



Blurred



Scanning Angle up to 40°



## IP65 INDUSTRIAL-GRADE DESIGN WATER & DUST & DROP PROOF

ideal for any industrial using environment



## PLUG & PLAY

NO NEED TO INSTALL DRIVERS





## Handheld - 1D / 2D MW600X Series Ultra - Rugged Scanner

Be unstoppable with relentless performance



EtherNet/IP



Takes a beating and still scans faster and farther

### Features

- ❖ Corded and cordless models
- ❖ Multiple data capture models : standard range high density, DPM, extended range and more

### Portfolio Differentiators

- ❖ Instantly capture problematic barcodes
- ❖ Highest drop and tumble specifications
- ❖ Dust proof, spary proof, waterproof,
- ❖ IP65 & IP68 sealing
- ❖ Built to withstand extreme heat, cold and humidity
- ❖ Power Precision + provides visibility in to battery health (cordless only)
- ❖ Exclusive dedicated on-demand battery gauge (cordless only)
- ❖ Virtual Tether anti-loss and AutoConfig Scanner Setting capabilities



## Wireless Bluetooth Transmission

Bluetooth Transmission distance (open space)  
about 100 meters.



Laser Marking / Punching



Label Paper



Smooth Metal



Resin Parts



PE Plastic



PCB



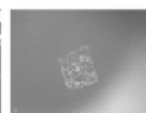
Metal Material



Brushed Plastic



Packing Board



Glass



Rubber





## Fixed Mount 1D / 2D Scanner MW500X SERIES

High-volume, hands-free scanning

Fast scanning

### Features

- ❖ Designed for small space with a near-zero footprint
- ❖ Can be used as a standalone scanner or integrated into the most space-constrained self-service kiosks
- ❖ Four data capture models : standard range, high density, direct part marks

### Portfolio Differentiators

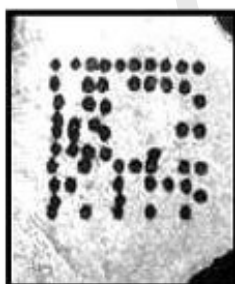
- ❖ Fast response sensor shutter speed
- ❖ Unique aiming pattern : bright, central dot ensures quick, accurate scanning-even in bright sunlight
- ❖ Communication - Profinet, Ethernet/IP, TCP/IP, RS232, USB



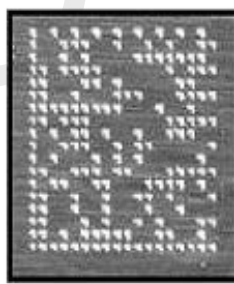
EtherNet/IP



Laser



Ink Jet



Dot Peen



Electro-Chemical Etch



## SMART OPTICAL CHARACTER RECOGNITION CAMERA / READER : MW700X SERIES

- ❖ MW700X intelligent camera is equipped with 1.6 million pixel black and white lens.
- ❖ Adopts high-performance image sensors to improve image quality.
- ❖ Multi-functional integrated smart camera to save space.
- ❖ Graphical process editing for easy for use.
- ❖ Built-in deep learning enables a range of tasks for character recognition (OCR).
- ❖ Integrated vision algorithms enable efficient high-precision positioning, measurement, recognition algorithm can achieve counting, defect, presence, positioning and other functions, to achieve a variety of effect scenarios application.
- ❖ Focal Length : 6mm, 12mm, 15mm
- ❖ Support a variety of industrial communication modes, to achieve worry-free docking.
- ❖ Through multiple IO and upstream and downstream processes, the adaptation is more convenient.
- ❖ IP67 protection for harsh industrial environments.



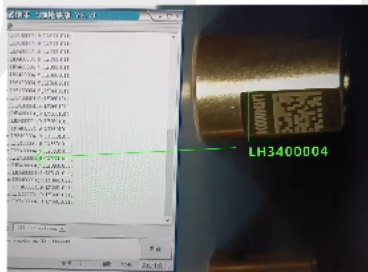
EtherNet/IP



Seamless Message Protocol



### OCR Cases



OCR recognition of numbers



Reading assembly Line text markings

## Comprehensive error-proof detection

### VISION SYSTEM --makes visual inspection easier

integrated error-proof detection algorithms such as presence, positives and negative, measurement, identification and counting, richer visual inspection algorithms can provide the best solution for diverse components on the production line.



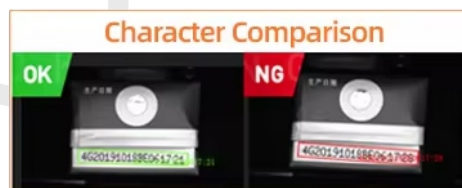
Abnormal Detection



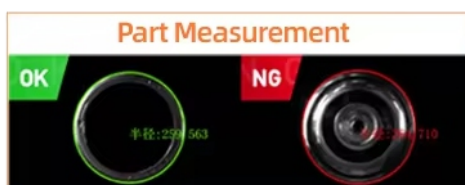
Spot Count



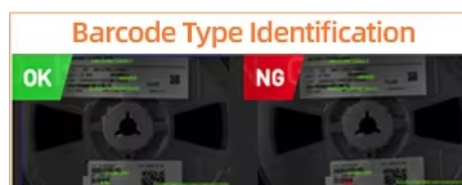
Pattern Detection



Character Comparison



Part Measurement



Barcode Type Identification

# HANDHELD INDUSTRIAL PDA

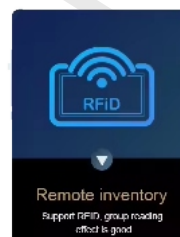
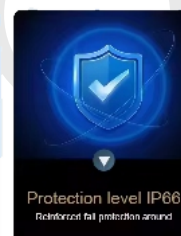
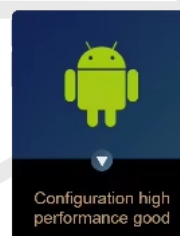
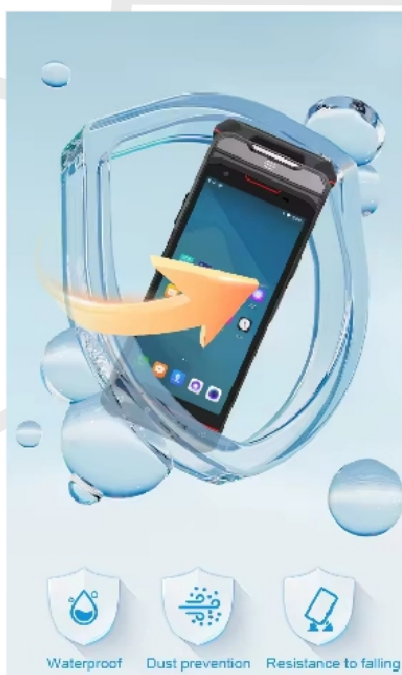


- Reading distance is 0-13m based on the UHF tags type and size
- Protocol EPC C1 FEN2 / ISO 18000-6C
- Rear camera 13MP HD camera
- 2D scanning engine
- PSAM 2pcs, micro SIM 1pcs, TF x 1pc
- Battery os 3.7v 10000Mah
- CPU is MT6762 Octa-core 64bit 2.0 GHz
- ROM + RAM : 3GB + 32 GB or 4GB + 64 GB (optional)

## MW800X SERIES



Android -based rugged mobile computer. With its fast 4G Connectivity and powerful octo-core processor as well as the comprehensive data capture options, including NFC (optional), best-in-class 1D/2D barcode scanning high-resolution camera and GPS, you can find this easy-to-deploy device an exceptionally valuable helper for your workers to increase their efficiency and productivity. With its highly customizable ability, enterprises can deploy this single device in many areas, including logistics, warehouse management, asset tracking, fleet management, health care and etc.



Android



4G



WIFI



Bluetooth



UHF



1D barcode



2D barcode



SIM



NFC



Camera



GPS





## **Handheld MW100X SERIES** **1D / 2D - Sticker Reader - USB / RS232**

Affordability and simplicity delivered

The benefits of 2D imaging at an outstanding value with minimal investment.

### **Features**

- ❖ Corded and cordless models
- ❖ Attractive price point
- ❖ Backwards compatible with cables
- ❖ Averages 21% faster for a variety of checkout tasks compared to similar competitive models\*

### **Portfolio Differentiators**

- ❖ First-time, every-time scanning on essential 1D and 2D barcodes
- ❖ Flexible charging options with presentation cradle or micro USB cable
- ❖ Patent pending aim line helps transition users from 1D to 2D



## **Handheld Wireless** **1D / 2D - DPM Reader - USB / RS232**

Do more throughout your organization

The versatility and scanning performance needed to keep checkout lanes, manufacturing lines and warehouses running smoothly.

### **Features**

- ❖ Corded model
- ❖ A Model for every need in your organization
- ❖ 14% faster scanning through plexiglass during checked compared to the nearest competitor\*

### **Portfolio Differentiators**

- ❖ Class-leading decode performance
- ❖ Industry-leading working range
- ❖ Multi-Code Data Formatting and Intelligent
- ❖ Document Capture

WHEN YOU  
WANT TO GIVE  
YOUR  
EMPLOYEES THE  
ULTIMATE IN  
SCANNING  
PERFORMANCE,  
COMFORT AND  
EASE OF USE.....

THINK  
MAVEN WORKS

CAMERA /  
SCANNERS FOR  
EVERY TYPE OF  
INDUSTRIES AND  
EVERY  
INDUSTRIAL  
ENCIRONMENT



## OUR CLIENTS



Sundram Fasteners  
Limited



# MAVEN WORKS

— TRACK AND TRACE —

Office & Works:  
Plot No: 1 & 2, 5<sup>th</sup> Main Road,  
Maxworth Nagar 1<sup>st</sup> Phase,  
Kolapakkam, Chennai – 600128.

Email: [info@mavenworks.net](mailto:info@mavenworks.net)

Mobile : +91 9176660971  
+91 9360280585  
+91 9384083055

Website: [www.mavenworks.net](http://www.mavenworks.net)